

## TL499A Wide-Range Power-Supply Controllers

## 1 Features

- Internal Series-Pass and Step-Up Switching Regulator
- Output Adjustable From 2.9 V to 30 V
- 1-V to 10-V Input for Switching Regulator
- 4.5-V to 32-V Input for Series Regulator
- Externally Controlled Switching Current
- No External Rectifier Required

## 2 Applications

- Voltage Boosting
- Dual-Supply Voltage Regulation
- Battery Back-Ups
- Microprocessor Memory Power

### 3 Description

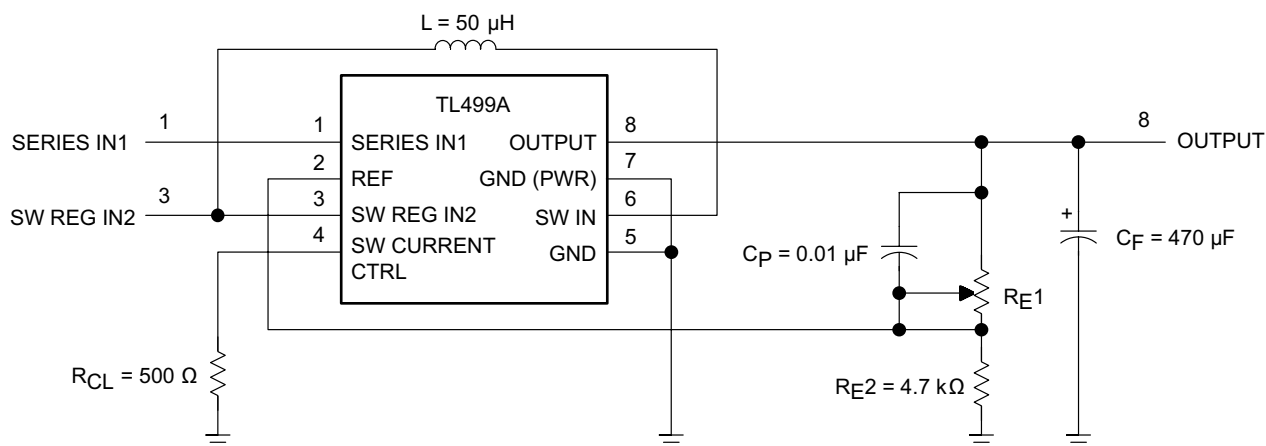
The TL499A device is an integrated circuit designed to provide a wide range of adjustable regulated supply voltages. The regulated output voltage can be varied from 2.9 V to 30 V by adjusting two external resistors. When the TL499A is ac-coupled to line power through a step-down transformer, it operates as a series DC voltage regulator to maintain the regulated output voltage. With the addition of a battery from 1.1 V to 10 V, an inductor, a filter capacitor, and two resistors, the TL499A operates as a step-up switching regulator during an AC-line failure. The adjustable regulated output voltage makes the TL499A useful for a wide range of applications. Providing backup power during an AC-line failure makes the TL499A extremely useful in microprocessor memory applications. The TL499AC is characterized for operation from  $-20^{\circ}\text{C}$  to  $+85^{\circ}\text{C}$ .

### Device Information<sup>(1)</sup>

| PART NUMBER | PACKAGE (PIN) | BODY SIZE (NOM)   |
|-------------|---------------|-------------------|
| TL499A      | SO (8)        | 6.20 mm x 5.30 mm |
|             | PDIP (8)      | 9.81 mm x 6.35 mm |

(1) For all available packages, see the orderable addendum at the end of the data sheet.

## Typical Application



An IMPORTANT NOTICE at the end of this data sheet addresses availability, warranty, changes, use in safety-critical applications, intellectual property matters and other important disclaimers. PRODUCTION DATA.

## Table of Contents

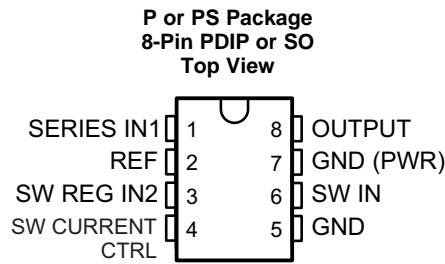
|  |          |  |           |
|--|----------|--|-----------|
| <b>1 Features</b> .....                        | <b>1</b> | 7.3 Feature Description .....                                    | <b>6</b>  |
| <b>2 Applications</b> .....                    | <b>1</b> | 7.4 Device Functional Modes .....                                | <b>6</b>  |
| <b>3 Description</b> .....                     | <b>1</b> | <b>8 Application and Implementation</b> .....                    | <b>7</b>  |
| <b>4 Revision History</b> .....                | <b>2</b> | 8.1 Application Information .....                                | <b>7</b>  |
| <b>5 Pin Configuration and Functions</b> ..... | <b>3</b> | 8.2 Typical Application .....                                    | <b>7</b>  |
| <b>6 Specifications</b> .....                  | <b>3</b> | <b>9 Power Supply Recommendations</b> .....                      | <b>10</b> |
| 6.1 Absolute Maximum Ratings .....             | <b>3</b> | <b>10 Layout</b> .....   | <b>11</b> |
| 6.2 ESD Ratings .....                          | <b>3</b> | 10.1 Layout Guidelines .....                                     | <b>11</b> |
| 6.3 Recommended Operating Conditions .....     | <b>4</b> | 10.2 Layout Example .....  | <b>11</b> |
| 6.4 Thermal Information .....                  | <b>4</b> | <b>11 Device and Documentation Support</b> .....                 | <b>12</b> |
| 6.5 Electrical Characteristics .....           | <b>4</b> | 11.1 Community Resources .....                                   | <b>12</b> |
| 6.6 Typical Characteristics .....              | <b>5</b> | 11.2 Trademarks .....  | <b>12</b> |
| <b>7 Detailed Description</b> .....            | <b>6</b> | 11.3 Electrostatic Discharge Caution .....                       | <b>12</b> |
| 7.1 Overview .....                             | <b>6</b> | 11.4 Glossary .....  | <b>12</b> |
| 7.2 Functional Block Diagram .....             | <b>6</b> | <b>12 Mechanical, Packaging, and Orderable Information</b> ..... | <b>12</b> |

## 4 Revision History

NOTE: Page numbers for previous revisions may differ from page numbers in the current version.

| Changes from Revision G (September 2001) to Revision H  | Page     |
|---|----------|
| <ul style="list-style-type: none"> <li>Added <i>Pin Configuration and Functions</i> section, <i>ESD Ratings</i> table, <i>Feature Description</i> section, <i>Device Functional Modes</i>, <i>Application and Implementation</i> section, <i>Power Supply Recommendations</i> section, <i>Layout</i> section, <i>Device and Documentation Support</i> section, and <i>Mechanical, Packaging, and Orderable Information</i> section .....</li> </ul> | <b>1</b> |

## 5 Pin Configuration and Functions



### Pin Functions

| PIN             |     | I/O | DESCRIPTION                                   |
|-----------------|-----|-----|---|
| NAME            | NO. |     |   |
| GND             | 5   | —   | Signal ground.                                |
| GND (PWR)       | 7   | —   | Power ground.                                 |
| OUTPUT          | 8   | O   | Regulated output                              |
| REF             | 2   | I   | Feedback tap for output voltage               |
| SERIES IN1      | 1   | —   | Power source for series voltage regulator.    |
| SW CURRENT CTRL | 4   | I/O | Resistor to ground controls switching current |
| SW IN           | 6   | I/O | Step up switching inductor node               |
| SW REG IN2      | 3   | —   | Power source for step-up switching regulator. |

## 6 Specifications

### 6.1 Absolute Maximum Ratings

over operating free-air temperature range (unless otherwise noted)<sup>(1)</sup>

|                  |  | MIN  | MAX | UNIT |
|------------------|--|------|-----|------|
| V <sub>O</sub>   | Output voltage <sup>(2)</sup>                                | −0.3 | 35  | V    |
| V <sub>I1</sub>  | Input voltage, series regulator                              | −0.3 | 35  | V    |
| V <sub>I2</sub>  | Input voltage, switching regulator                           | −0.3 | 10  | V    |
|                  | Blocking-diode reverse voltage                               |      | 35  | V    |
|                  | Blocking-diode forward current                               |      | 1   | A    |
| SW IN            | Power switch current   |      | 1   | A    |
|                  | Lead temperature 1.6 mm (1/16 inch) from case for 10 seconds |      | 260 | °C   |
| T <sub>J</sub>   | Junction temperature   |      | 150 | °C   |
| T <sub>stg</sub> | Storage temperature  | −65  | 150 | °C   |

- (1) Stresses beyond those listed under *Absolute Maximum Ratings* may cause permanent damage to the device. These are stress ratings only, which do not imply functional operation of the device at these or any other conditions beyond those indicated under *Recommended Operating Conditions*. Exposure to absolute-maximum-rated conditions for extended periods may affect device reliability.
- (2) All voltage values are with respect to network ground terminal.

### 6.2 ESD Ratings

|                    |                         |  | VALUE | UNIT |
|--------------------|-------------------------|--|-------|------|
| V <sub>(ESD)</sub> | Electrostatic discharge | Human body model (HBM), per ANSI/ESDA/JEDEC JS-001 <sup>(1)</sup>              | ±200  | V    |
|                    |                         | Charged-device model (CDM), per JEDEC specification JESD22-C101 <sup>(2)</sup> | ±2000 |      |

- (1) JEDEC document JEP155 states that 500-V HBM allows safe manufacturing with a standard ESD control process. Manufacturing with less than 500-V HBM is possible with the necessary precautions. Pins listed as ±200-V may actually have higher performance.
- (2) JEDEC document JEP157 states that 250-V CDM allows safe manufacturing with a standard ESD control process.

### 6.3 Recommended Operating Conditions

over operating free-air temperature range (unless otherwise noted)

|   | MIN | NOM | MAX  | UNIT         |
|---|-----|-----|------|--------------|
| Output voltage, $V_O$   | 2.9 |     | 30   | V            |
| Input voltage, $V_{I1}$ (SERIES IN1)  | 4.5 |     | 32   | V            |
| Input voltage, $V_{I2}$ (SW REG IN2)  | 1.1 |     | 10   | V            |
| Output-to-input differential voltage, switching regulator, $V_O - V_{I2}$ (see <sup>(1)</sup> ) | 1.2 |     | 28.9 | V            |
| Continuous output current, $I_O$  |     |     | 100  | mA           |
| Power switch current (at SW IN)   |     |     | 500  | mA           |
| Current-limiting resistor, $R_{CL}$   | 150 |     | 1000 | $\Omega$     |
| Filter capacitor  | 100 |     | 470  | $\mu$ F      |
| Pass capacitor  |     | 0.1 |      | $\mu$ F      |
| Inductor, L (dcr $\leq 0.1 \Omega$ )  | 50  |     | 150  | $\mu$ H      |
| Operating free-air temperature, $T_A$   | -20 |     | 85   | $^{\circ}$ C |

- (1) When operating temperature range is  $T_A \leq 70^{\circ}\text{C}$ , minimum  $V_O - V_{I2}$  is  $\geq 1.2$  V. When operating temperature range is  $T_A \leq 85^{\circ}\text{C}$ , minimum  $V_O - V_{I2}$  is  $\geq 1.9$  V.

### 6.4 Thermal Information

| THERMAL METRIC <sup>(1)</sup> |  | TL499A   |         | UNIT                 |
|-------------------------------|--|----------|---------|----------------------|
|                               |  | P (PDIP) | PS (SO) |                      |
|                               |  | 8 PINS   | 8 PINS  |                      |
| $R_{\theta JA}$               | Junction-to-ambient thermal resistance <sup>(2)(3)</sup> | 49.7     | 110.7   | $^{\circ}\text{C/W}$ |
| $R_{\theta JC(\text{top})}$   | Junction-to-case (top) thermal resistance                | 38.8     | 69.0    | $^{\circ}\text{C/W}$ |
| $R_{\theta JB}$               | Junction-to-board thermal resistance                     | 26.9     | 55.7    | $^{\circ}\text{C/W}$ |
| $\Psi_{JT}$                   | Junction-to-top characterization parameter               | 16.1     | 20.1    | $^{\circ}\text{C/W}$ |
| $\Psi_{JB}$                   | Junction-to-board characterization parameter             | 26.7     | 54.9    | $^{\circ}\text{C/W}$ |

- (1) For more information about traditional and new thermal metrics, see the *Semiconductor and IC Package Thermal Metrics* application report, [SPRA953](#).  
(2) Maximum power dissipation is a function of  $T_{J(\text{max})}$ ,  $\theta_{JA}$ , and  $T_A$ . The maximum allowable power dissipation at any allowable ambient temperature is  $P_D = (T_{J(\text{max})} - T_A) / \theta_{JA}$ . Operating at the absolute maximum  $T_J$  of  $150^{\circ}\text{C}$  can affect reliability.  
(3) The package thermal impedance is calculated in accordance with JESD 51-7.

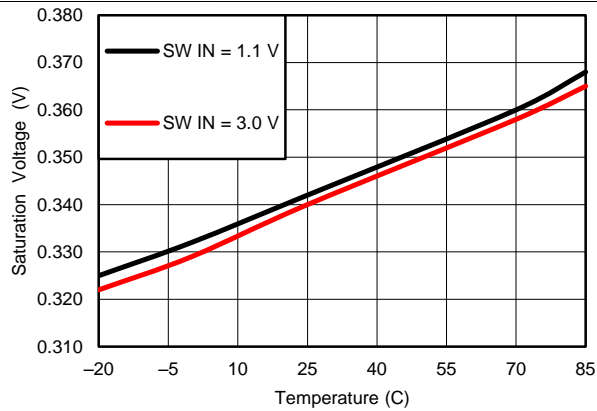
### 6.5 Electrical Characteristics

over operating free-air temperature range (unless otherwise noted)

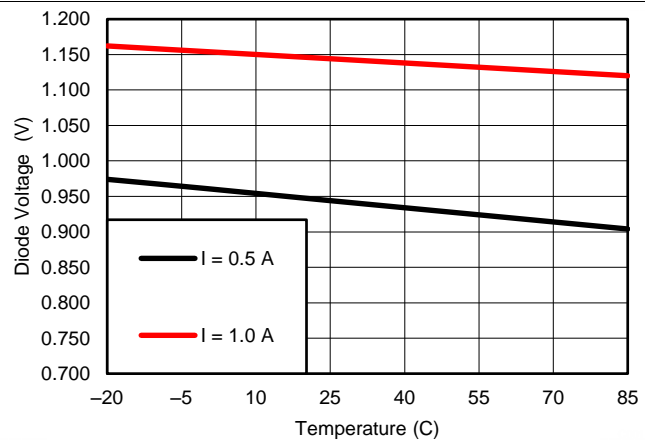
| PARAMETER   |                                   | TEST CONDITIONS   | MIN | TYP  | MAX  | UNIT    |
|---|-----------------------------------|---|-----|------|------|---------|
| Voltage deviation (see <sup>(1)</sup> )           |                                   |   |     | 20   | 30   | mV/V    |
| $V_O - V_{I2}$                                    | Switching regulator minimum boost | $T_A = -20^{\circ}\text{C}$ to $70^{\circ}\text{C}$                                   | 1.2 |      |      | V       |
|   |                                   | $T_A = -20^{\circ}\text{C}$ to $85^{\circ}\text{C}$                                   | 1.9 |      |      |         |
| Dropout voltage                                   | Series regulator                  | $V_{I1} = 15$ V, $I_O = 50$ mA  |     |      | 1.8  | V       |
| Reference voltage (internal)                      |                                   | $V_{I1} = 5$ V, $V_O = 3$ V, $I_O = 1$ mA   | 1.2 | 1.26 | 1.32 | V       |
| Reference-voltage change with temperature         |                                   |   |     | 5    | 10   | mV/V    |
| Output regulation (of reference voltage)          |                                   | $I_O = 1$ mA to 50 mA   |     | 10   | 30   | mV/V    |
| Output current<br>(see <a href="#">Figure 3</a> ) | Switching regulator               | $V_{I2} = 1.1$ V, $V_O = 12$ V,<br>$R_{CL} = 150 \Omega$ , $T_A = 25^{\circ}\text{C}$ |     |      | 10   | mA      |
|   |                                   | $V_{I2} = 1.5$ V, $V_O = 15$ V,<br>$R_{CL} = 150 \Omega$ , $T_A = 25^{\circ}\text{C}$ |     |      | 15   |         |
|   |                                   | $V_{I2} = 6$ V, $V_O = 30$ V,<br>$R_{CL} = 150 \Omega$ , $T_A = 25^{\circ}\text{C}$   |     |      | 65   |         |
|   | Series regulator                  |   |     |      | 100  |         |
| Standby current                                   | Switching regulator               | $V_{I2} = 3$ V, $V_O = 9$ V, $T_A = 25^{\circ}\text{C}$                               |     | 15   | 80   | $\mu$ A |
|   | Series regulator                  | $V_{I1} = 15$ V, $V_O = 9$ V, $R_{E2} = 4.7$ k $\Omega$                               |     | 0.8  | 1.2  | mA      |

- (1) Voltage deviation is the output voltage difference that occurs in a change from series regulation to switching regulation: Voltage deviation =  $V_O$  (series regulation) –  $V_O$  (switching regulation)

## 6.6 Typical Characteristics



**Figure 1. Switch Saturation Voltage vs Temperature**



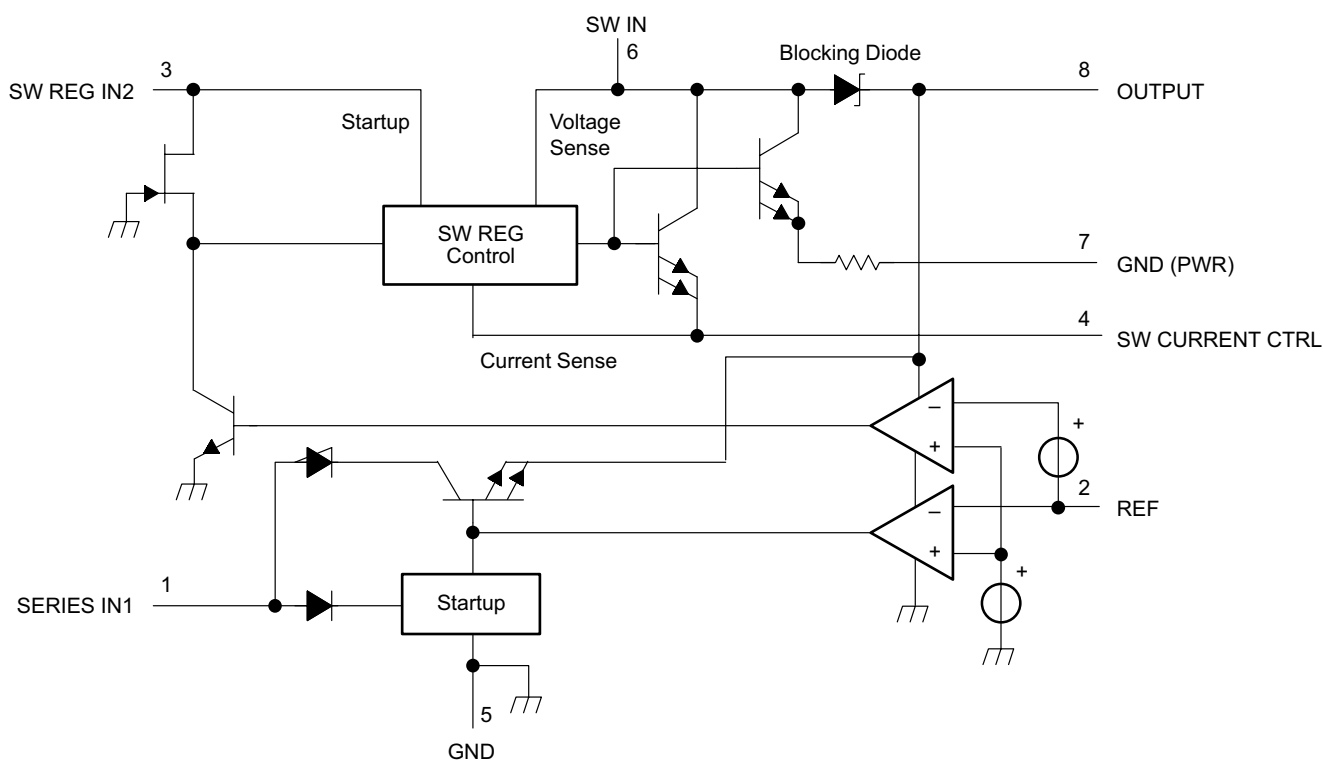
**Figure 2. Diode Forward Voltage vs Temperature**

## 7 Detailed Description

### 7.1 Overview

The TL499A provides an adjustable output voltage between 2.9 V and 30 V. The primary power source uses the internal linear regulator to provide the output voltage. When the primary power source is removed, the secondary power source is stepped up using the internal switching regulator to provide the output voltage.

### 7.2 Functional Block Diagram



### 7.3 Feature Description

The TL499A has an adjustable output voltage set by feedback provided to REF pin. An adjustable switching current is set by the value of the resistor on the SW CURRENT CONTROL pin. The lower resistance provides increased switching current.

Dual power supply inputs also provide protection against power faults on the main supply of the TL499A.

### 7.4 Device Functional Modes

The TL499A has two functional modes:

- Linear voltage regulation when SERIES IN1 supply is present.
- Step-up voltage regulation when SERIES IN1 supply is absent.

## 8 Application and Implementation

### NOTE

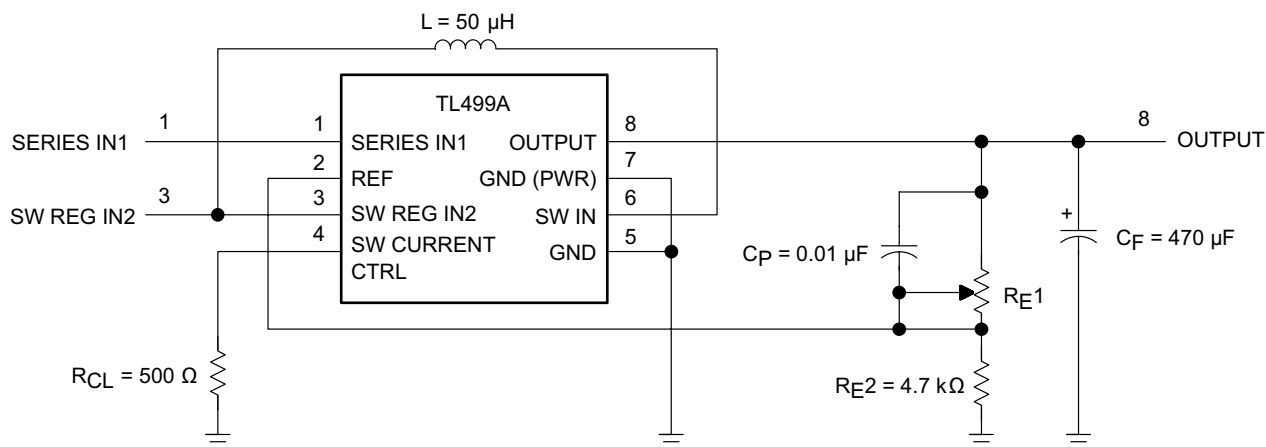
Information in the following applications sections is not part of the TI component specification, and TI does not warrant its accuracy or completeness. TI's customers are responsible for determining suitability of components for their purposes. Customers should validate and test their design implementation to confirm system functionality.

### 8.1 Application Information

One or two power sources will be regulated to an output voltage set by two feedback resistors.

### 8.2 Typical Application

Figure 3 shows the basic configuration of the two power source voltage regulator



**Figure 3. TL499A Basic Configuration**

#### 8.2.1 Design Requirements

Provide one or more of the following power sources:

- SERIES IN1 voltage greater than OUTPUT voltage by more than dropout voltage
- SW REG IN2 voltage less than OUTPUT voltage

Select  $R_{CL}$  value based on Table 1 through Table 5.

**Table 1. Maximum Output Current vs Input and Output Voltages for Step-Up Switching Regulator With  $R_{CL} = 150 \Omega$**

| OUTPUT<br>VOLTAGE (V) | SWITCHING REGULATOR INPUT VOLTAGE (SW REG IN2) (V) |     |     |     |     |    |     |     |     |     |     |
|-----------------------|--|-----|-----|-----|-----|----|-----|-----|-----|-----|-----|
|                       | 1.1  | 1.2 | 1.3 | 1.5 | 1.7 | 2  | 2.5 | 3   | 5   | 6   | 9   |
|                       | OUTPUT CURRENT (mA)                                |     |     |     |     |    |     |     |     |     |     |
| 30                    |  |     |     |     |     |    |     |     |     | 65  | 90  |
| 25                    |  |     |     |     |     |    |     |     | 50  | 80  | 100 |
| 20                    |  |     |     |     |     | 20 | 25  | 30  | 85  | 100 | 100 |
| 15                    |  |     |     | 15  | 20  | 30 | 45  | 55  | 100 | 100 | 100 |
| 12                    | 10   | 15  | 20  | 25  | 30  | 40 | 55  | 70  | 100 | 100 | 100 |
| 10                    | 15   | 20  | 25  | 30  | 35  | 45 | 65  | 80  | 100 | 100 |     |
| 9                     | 20   | 25  | 25  | 35  | 40  | 50 | 70  | 90  | 100 | 100 |     |
| 6                     | 30   | 35  | 40  | 45  | 55  | 75 | 95  | 100 |     |     |     |

## Typical Application (continued)

**Table 1. Maximum Output Current vs Input and Output Voltages for Step-Up Switching Regulator With  $R_{CL} = 150\ \Omega$  (continued)**

| OUTPUT<br>VOLTAGE (V) | SWITCHING REGULATOR INPUT VOLTAGE (SW REG IN2) (V) |                   |                   |                    |                    |    |     |                    |   |   |   |
|-----------------------|--|-------------------|-------------------|--------------------|--------------------|----|-----|--------------------|---|---|---|
|                       | 1.1  | 1.2               | 1.3               | 1.5                | 1.7                | 2  | 2.5 | 3                  | 5   | 6 | 9 |
|                       | OUTPUT CURRENT (mA)                                |                   |                   |                    |                    |    |     |                    |   |   |   |
| 5                     | 35   | 40                | 45                | 55                 | 70                 | 85 | 100 | 100                | Circuit of <a href="#">Figure 1</a> , except:<br>$R_{CL} = 150\ \Omega$<br>$C_F = 330\ \mu\text{F}$<br>$C_P = 0.1\ \mu\text{F}$ |   |   |
| 4.5                   | 35   | 45                | 50                | 60                 | 75                 | 95 | 100 | 100 <sup>(1)</sup> |   |   |   |
| 3                     | 55   | 65 <sup>(1)</sup> | 75 <sup>(1)</sup> | 95 <sup>(1)</sup>  | 100 <sup>(1)</sup> |    |     |                    |   |   |   |
| 2.9                   | 60 <sup>(1)</sup>                                  | 70 <sup>(1)</sup> | 75 <sup>(1)</sup> | 100 <sup>(1)</sup> | 100 <sup>(1)</sup> |    |     |                    |   |   |   |

(1) The difference between the output and input voltage for these combinations is greater than the minimum output-to-input differential-voltage specification at 70°C (1.2 V), but less than the minimum at 85°C (1.9 V).

**Table 2. Maximum Output Current vs Input and Output Voltages for Step-Up Switching Regulator With  $R_{CL} = 200\ \Omega$**

| OUTPUT<br>VOLTAGE (V) | SWITCHING REGULATOR INPUT VOLTAGE (SW REG IN2) (V) |                   |                   |                   |                    |    |     |                    |   |     |     |
|-----------------------|--|-------------------|-------------------|-------------------|--------------------|----|-----|--------------------|---|-----|-----|
|                       | 1.1  | 1.2               | 1.3               | 1.5               | 1.7                | 2  | 2.5 | 3                  | 5   | 6   | 9   |
|                       | OUTPUT CURRENT (mA)                                |                   |                   |                   |                    |    |     |                    |   |     |     |
| 30                    |  |                   |                   |                   |                    |    |     |                    |   | 50  | 100 |
| 25                    |  |                   |                   |                   |                    |    |     |                    | 50  | 70  | 100 |
| 20                    |  |                   |                   |                   |                    | 15 | 25  | 30                 | 70  | 90  | 100 |
| 15                    |  |                   |                   | 10                | 15                 | 25 | 35  | 45                 | 90  | 100 | 100 |
| 12                    | 10   | 10                | 15                | 20                | 25                 | 35 | 45  | 60                 | 100   | 100 | 100 |
| 10                    | 15   | 20                | 20                | 25                | 30                 | 40 | 55  | 70                 | 100   | 100 |     |
| 9                     | 20   | 20                | 25                | 30                | 35                 | 45 | 60  | 80                 | 100   |     |     |
| 6                     | 25   | 30                | 35                | 45                | 50                 | 65 | 90  | 100                |   |     |     |
| 5                     | 30   | 35                | 40                | 55                | 60                 | 75 | 100 | 100                | Circuit of <a href="#">Figure 1</a> , except:<br>$R_{CL} = 200\ \Omega$<br>$C_F = 330\ \mu\text{F}$<br>$C_P = 0.1\ \mu\text{F}$ |     |     |
| 4.5                   | 35   | 40                | 45                | 55                | 65                 | 85 | 100 | 100 <sup>(1)</sup> |   |     |     |
| 3                     | 50   | 55 <sup>(1)</sup> | 65 <sup>(1)</sup> | 80 <sup>(1)</sup> | 90 <sup>(1)</sup>  |    |     |                    |   |     |     |
| 2.9                   | 50 <sup>(1)</sup>                                  | 60 <sup>(1)</sup> | 65 <sup>(1)</sup> | 85 <sup>(1)</sup> | 100 <sup>(1)</sup> |    |     |                    |   |     |     |

(1) The difference between the output and input voltage for these combinations is greater than the minimum output-to-input differential-voltage specification at 70°C (1.2 V), but less than the minimum at 85°C (1.9 V).

**Table 3. Maximum Output Current vs Input and Output Voltages for Step-Up Switching Regulator With  $R_{CL} = 300\ \Omega$**

| OUTPUT<br>VOLTAGE (V) | SWITCHING REGULATOR INPUT VOLTAGE (SW REG IN2) (V) |     |     |     |     |    |     |    |     |     |     |
|-----------------------|--|-----|-----|-----|-----|----|-----|----|-----|-----|-----|
|                       | 1.1  | 1.2 | 1.3 | 1.5 | 1.7 | 2  | 2.5 | 3  | 5   | 6   | 9   |
|                       | OUTPUT CURRENT (mA)                                |     |     |     |     |    |     |    |     |     |     |
| 30                    |  |     |     |     |     |    |     |    |     | 40  | 70  |
| 25                    |  |     |     |     |     |    |     |    | 40  | 55  | 100 |
| 20                    |  |     |     |     |     | 10 | 15  | 20 | 55  | 70  | 100 |
| 15                    |  |     |     | 10  | 10  | 20 | 30  | 35 | 75  | 95  | 100 |
| 12                    | 10   | 10  | 10  | 15  | 20  | 25 | 35  | 45 | 95  | 100 | 100 |
| 10                    | 15   | 15  | 15  | 20  | 25  | 30 | 45  | 55 | 100 | 100 |     |
| 9                     | 15   | 15  | 20  | 25  | 30  | 35 | 50  | 60 | 100 | 100 |     |
| 6                     | 25   | 25  | 30  | 35  | 45  | 55 | 70  | 90 |     |     |     |



**Table 3. Maximum Output Current vs Input and Output Voltages for Step-Up Switching Regulator With  $R_{CL} = 300\ \Omega$  (continued)**

| OUTPUT<br>VOLTAGE (V) | SWITCHING REGULATOR INPUT VOLTAGE (SW REG IN2) (V) |                   |                   |                   |                   |    |     |                    |  |   |   |
|-----------------------|--|-------------------|-------------------|-------------------|-------------------|----|-----|--------------------|--|---|---|
|                       | 1.1  | 1.2               | 1.3               | 1.5               | 1.7               | 2  | 2.5 | 3                  | 5  | 6 | 9 |
|                       | OUTPUT CURRENT (mA)                                |                   |                   |                   |                   |    |     |                    |  |   |   |
| 5                     | 30   | 30                | 35                | 45                | 50                | 65 | 85  | 100                | Circuit of <a href="#">Figure 1</a> , except:<br>R <sub>CL</sub> = 300 Ω<br>C <sub>F</sub> = 330 μF<br>C <sub>P</sub> = 0.1 μF |   |   |
| 4.5                   | 30   | 35                | 40                | 45                | 55                | 70 | 95  | 100 <sup>(1)</sup> |  |   |   |
| 3                     | 45   | 50 <sup>(1)</sup> | 55 <sup>(1)</sup> | 70 <sup>(1)</sup> | 90 <sup>(1)</sup> |    |     |                    |  |   |   |
| 2.9                   | 45 <sup>(1)</sup>                                  | 50 <sup>(1)</sup> | 60 <sup>(1)</sup> | 75 <sup>(1)</sup> | 95 <sup>(1)</sup> |    |     |                    |  |   |   |

(1) The difference between the output and input voltage for these combinations is greater than the minimum output-to-input differential-voltage specification at 70°C (1.2 V), but less than the minimum at 85°C (1.9 V).

**Table 4. Maximum Output Current vs Input and Output Voltages for Step-Up Switching Regulator With  $R_{CL} = 510\ \Omega$** 

| OUTPUT<br>VOLTAGE (V) | SWITCHING REGULATOR INPUT VOLTAGE (SW REG IN2) (V) |                   |                   |                   |                   |    |     |                   |  |     |     |
|-----------------------|--|-------------------|-------------------|-------------------|-------------------|----|-----|-------------------|--|-----|-----|
|                       | 1.1  | 1.2               | 1.3               | 1.5               | 1.7               | 2  | 2.5 | 3                 | 5  | 6   | 9   |
|                       | OUTPUT CURRENT (mA)                                |                   |                   |                   |                   |    |     |                   |  |     |     |
| 30                    |  |                   |                   |                   |                   |    |     |                   |  | 30  | 50  |
| 25                    |  |                   |                   |                   |                   |    |     |                   | 25   | 40  | 75  |
| 20                    |  |                   |                   |                   |                   |    |     |                   | 40   | 55  | 90  |
| 15                    |  |                   |                   |                   |                   |    | 15  | 20                | 55   | 70  | 100 |
| 12                    |  |                   |                   |                   | 10                | 15 | 25  | 35                | 65   | 80  | 100 |
| 10                    |  |                   |                   | 10                | 20                | 25 | 30  | 40                | 70   | 85  |     |
| 9                     | 10   | 10                | 10                | 15                | 20                | 25 | 35  | 45                | 75   | 100 |     |
| 6                     | 15   | 20                | 20                | 25                | 30                | 35 | 50  | 60                |  |     |     |
| 5                     | 20   | 20                | 35                | 30                | 35                | 45 | 55  | 70                | Circuit of <a href="#">Figure 1</a> , except:<br>R <sub>CL</sub> = 510 Ω<br>C <sub>F</sub> = 330 μF<br>C <sub>P</sub> = 0.1 μF |     |     |
| 4.5                   | 25   | 25                | 30                | 35                | 40                | 50 | 65  | 90 <sup>(1)</sup> |  |     |     |
| 3                     | 35   | 35 <sup>(1)</sup> | 40 <sup>(1)</sup> | 50 <sup>(1)</sup> | 75 <sup>(1)</sup> |    |     |                   |  |     |     |
| 2.9                   | 35 <sup>(1)</sup>                                  | 35 <sup>(1)</sup> | 40 <sup>(1)</sup> | 55 <sup>(1)</sup> | 80 <sup>(1)</sup> |    |     |                   |  |     |     |

(1) The difference between the output and input voltage for these combinations is greater than the minimum output-to-input differential-voltage specification at 70°C (1.2 V), but less than the minimum at 85°C (1.9 V).

**Table 5. Maximum Output Current vs Input and Output Voltages for Step-Up Switching Regulator With  $R_{CL} = 1\ k\Omega$** 

| OUTPUT<br>VOLTAGE (V) | SWITCHING REGULATOR INPUT VOLTAGE (SW REG IN2) (V) |                   |                   |                   |                   |    |     |                   |   |    |    |
|-----------------------|--|-------------------|-------------------|-------------------|-------------------|----|-----|-------------------|---|----|----|
|                       | 1.1  | 1.2               | 1.3               | 1.5               | 1.7               | 2  | 2.5 | 3                 | 5   | 6  | 9  |
|                       | OUTPUT CURRENT (mA)                                |                   |                   |                   |                   |    |     |                   |   |    |    |
| 30                    |  |                   |                   |                   |                   |    |     |                   |   |    | 35 |
| 25                    |  |                   |                   |                   |                   |    |     |                   |   | 35 | 50 |
| 20                    |  |                   |                   |                   |                   |    |     |                   |   | 35 | 60 |
| 15                    |  |                   |                   |                   |                   |    |     | 10                | 30  | 45 | 65 |
| 12                    |  |                   |                   |                   |                   |    |     | 20                | 40  | 45 | 85 |
| 10                    |  |                   |                   |                   |                   |    | 15  | 25                | 40  | 55 |    |
| 9                     |  |                   |                   | 10                | 10                | 15 | 25  | 30                | 45  | 60 |    |
| 6                     | 10   | 10                | 10                | 15                | 20                | 20 | 30  | 35                |   |    |    |
| 5                     | 10   | 10                | 15                | 20                | 20                | 25 | 35  | 40                | Circuit of <a href="#">Figure 1</a> , except:<br>R <sub>CL</sub> = 1 kΩ<br>C <sub>F</sub> = 330 μF<br>C <sub>P</sub> = 0.1 μF |    |    |
| 4.5                   | 15   | 15                | 15                | 20                | 25                | 30 | 40  | 45 <sup>(1)</sup> |   |    |    |
| 3                     | 20   | 25 <sup>(1)</sup> | 25 <sup>(1)</sup> | 30 <sup>(1)</sup> | 35 <sup>(1)</sup> |    |     |                   |   |    |    |
| 2.9                   | 20 <sup>(1)</sup>                                  | 25 <sup>(1)</sup> | 25 <sup>(1)</sup> | 30 <sup>(1)</sup> | 45 <sup>(1)</sup> |    |     |                   |   |    |    |

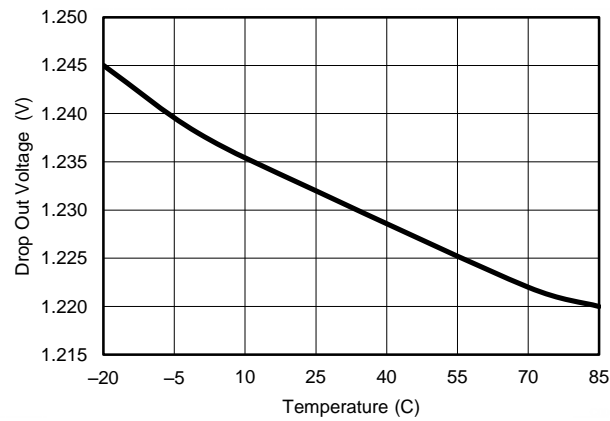
(1) The difference between the output and input voltage for these combinations is greater than the minimum output-to-input differential-voltage specification at 70°C (1.2 V), but less than the minimum at 85°C (1.9 V).

### 8.2.2 Detailed Design Procedure

Select the values for  $R_{E1}$  and  $R_{E2}$  using [Equation 1](#):

$$V_{OUT} = REF \times (1 + R_{E1}/R_{E2}) \quad (1)$$

### 8.2.3 Application Curve



$I_{OUT} = 50 \text{ mA}$

**Figure 4. Dropout Voltage vs Temperature**

## 9 Power Supply Recommendations

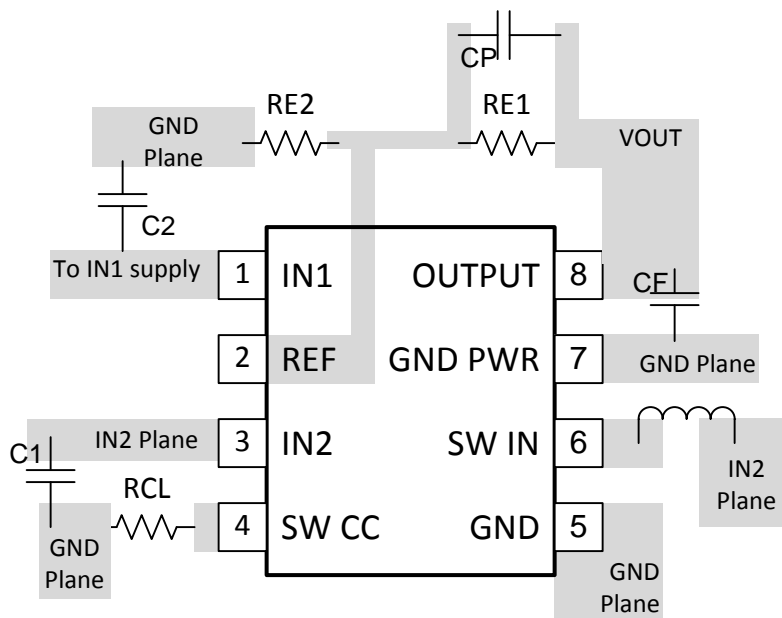
See [Recommended Operating Conditions](#) for allowable range for the power supply. Bypass capacitors must be placed near device supply pins.

## 10 Layout

### 10.1 Layout Guidelines

The switching nodes at pins 3, 6, 7, and 8 must use short traces with ground and power planes for reduced noise and improved performance.

### 10.2 Layout Example



**Figure 5. Typical Layout**

## 11 Device and Documentation Support

### 11.1 Community Resources

The following links connect to TI community resources. Linked contents are provided "AS IS" by the respective contributors. They do not constitute TI specifications and do not necessarily reflect TI's views; see TI's [Terms of Use](#).

**TI E2E™ Online Community** *TI's Engineer-to-Engineer (E2E) Community*. Created to foster collaboration among engineers. At [e2e.ti.com](http://e2e.ti.com), you can ask questions, share knowledge, explore ideas and help solve problems with fellow engineers.

**Design Support** *TI's Design Support* Quickly find helpful E2E forums along with design support tools and contact information for technical support.

### 11.2 Trademarks

E2E is a trademark of Texas Instruments.  
All other trademarks are the property of their respective owners.

### 11.3 Electrostatic Discharge Caution



These devices have limited built-in ESD protection. The leads should be shorted together or the device placed in conductive foam during storage or handling to prevent electrostatic damage to the MOS gates.

### 11.4 Glossary

[SLYZ022](#) — *TI Glossary*.

This glossary lists and explains terms, acronyms, and definitions.

## 12 Mechanical, Packaging, and Orderable Information

The following pages include mechanical, packaging, and orderable information. This information is the most current data available for the designated devices. This data is subject to change without notice and revision of this document. For browser-based versions of this data sheet, refer to the left-hand navigation.

## PACKAGING INFORMATION

| Orderable Device | Status<br>(1) | Package Type | Package<br>Drawing | Pins | Package<br>Qty | Eco Plan<br>(2) | Lead finish/<br>Ball material<br>(6) | MSL Peak Temp<br>(3) | Op Temp (°C) | Device Marking<br>(4/5) | Samples                 |
|------------------|---------------|--------------|--------------------|------|----------------|-----------------|--------------------------------------|----------------------|--------------|-------------------------|-------------------------|
| TL499ACP         | ACTIVE        | PDIP         | P                  | 8    | 50             | RoHS & Green    | NIPDAU                               | N / A for Pkg Type   | -20 to 85    | TL499ACP                | <a href="#">Samples</a> |
| TL499ACPE4       | ACTIVE        | PDIP         | P                  | 8    | 50             | RoHS & Green    | NIPDAU                               | N / A for Pkg Type   | -20 to 85    | TL499ACP                | <a href="#">Samples</a> |
| TL499ACPSR       | ACTIVE        | SO           | PS                 | 8    | 2000           | RoHS & Green    | NIPDAU                               | Level-1-260C-UNLIM   | -20 to 85    | T499A                   | <a href="#">Samples</a> |

(1) The marketing status values are defined as follows:

**ACTIVE:** Product device recommended for new designs.

**LIFEBUY:** TI has announced that the device will be discontinued, and a lifetime-buy period is in effect.

**NRND:** Not recommended for new designs. Device is in production to support existing customers, but TI does not recommend using this part in a new design.

**PREVIEW:** Device has been announced but is not in production. Samples may or may not be available.

**OBSOLETE:** TI has discontinued the production of the device.

(2) **RoHS:** TI defines "RoHS" to mean semiconductor products that are compliant with the current EU RoHS requirements for all 10 RoHS substances, including the requirement that RoHS substance do not exceed 0.1% by weight in homogeneous materials. Where designed to be soldered at high temperatures, "RoHS" products are suitable for use in specified lead-free processes. TI may reference these types of products as "Pb-Free".

**RoHS Exempt:** TI defines "RoHS Exempt" to mean products that contain lead but are compliant with EU RoHS pursuant to a specific EU RoHS exemption.

**Green:** TI defines "Green" to mean the content of Chlorine (Cl) and Bromine (Br) based flame retardants meet JS709B low halogen requirements of <=1000ppm threshold. Antimony trioxide based flame retardants must also meet the <=1000ppm threshold requirement.

(3) MSL, Peak Temp. - The Moisture Sensitivity Level rating according to the JEDEC industry standard classifications, and peak solder temperature.

(4) There may be additional marking, which relates to the logo, the lot trace code information, or the environmental category on the device.

(5) Multiple Device Markings will be inside parentheses. Only one Device Marking contained in parentheses and separated by a "~" will appear on a device. If a line is indented then it is a continuation of the previous line and the two combined represent the entire Device Marking for that device.

(6) Lead finish/Ball material - Orderable Devices may have multiple material finish options. Finish options are separated by a vertical ruled line. Lead finish/Ball material values may wrap to two lines if the finish value exceeds the maximum column width.

**Important Information and Disclaimer:** The information provided on this page represents TI's knowledge and belief as of the date that it is provided. TI bases its knowledge and belief on information provided by third parties, and makes no representation or warranty as to the accuracy of such information. Efforts are underway to better integrate information from third parties. TI has taken and continues to take reasonable steps to provide representative and accurate information but may not have conducted destructive testing or chemical analysis on incoming materials and chemicals. TI and TI suppliers consider certain information to be proprietary, and thus CAS numbers and other limited information may not be available for release.

---

In no event shall TI's liability arising out of such information exceed the total purchase price of the TI part(s) at issue in this document sold by TI to Customer on an annual basis.

## TAPE AND REEL INFORMATION



\*All dimensions are nominal

| Device     | Package Type | Package Drawing | Pins | SPQ  | Reel Diameter (mm) | Reel Width W1 (mm) | A0 (mm) | B0 (mm) | K0 (mm) | P1 (mm) | W (mm) | Pin1 Quadrant |
|------------|--------------|-----------------|------|------|--------------------|--------------------|---------|---------|---------|---------|--------|---------------|
| TL499ACPSR | SO           | PS              | 8    | 2000 | 330.0              | 16.4               | 8.35    | 6.6     | 2.4     | 12.0    | 16.0   | Q1            |

## TAPE AND REEL BOX DIMENSIONS



\*All dimensions are nominal

| Device     | Package Type | Package Drawing | Pins | SPQ  | Length (mm) | Width (mm) | Height (mm) |
|------------|--------------|-----------------|------|------|-------------|------------|-------------|
| TL499ACPSR | SO           | PS              | 8    | 2000 | 853.0       | 449.0      | 35.0        |



## MECHANICAL DATA

PS (R-PDSO-G8)

PLASTIC SMALL-OUTLINE PACKAGE



4040063/C 03/03

- NOTES:
- A. All linear dimensions are in millimeters.
  - B. This drawing is subject to change without notice.
  - C. Body dimensions do not include mold flash or protrusion, not to exceed 0,15.

P (R-PDIP-T8)

PLASTIC DUAL-IN-LINE PACKAGE



- NOTES:
- A. All linear dimensions are in inches (millimeters).
  - B. This drawing is subject to change without notice.
  - C. Falls within JEDEC MS-001 variation BA.

## IMPORTANT NOTICE AND DISCLAIMER

TI PROVIDES TECHNICAL AND RELIABILITY DATA (INCLUDING DATASHEETS), DESIGN RESOURCES (INCLUDING REFERENCE DESIGNS), APPLICATION OR OTHER DESIGN ADVICE, WEB TOOLS, SAFETY INFORMATION, AND OTHER RESOURCES "AS IS" AND WITH ALL FAULTS, AND DISCLAIMS ALL WARRANTIES, EXPRESS AND IMPLIED, INCLUDING WITHOUT LIMITATION ANY IMPLIED WARRANTIES OF MERCHANTABILITY, FITNESS FOR A PARTICULAR PURPOSE OR NON-INFRINGEMENT OF THIRD PARTY INTELLECTUAL PROPERTY RIGHTS.

These resources are intended for skilled developers designing with TI products. You are solely responsible for (1) selecting the appropriate TI products for your application, (2) designing, validating and testing your application, and (3) ensuring your application meets applicable standards, and any other safety, security, or other requirements. These resources are subject to change without notice. TI grants you permission to use these resources only for development of an application that uses the TI products described in the resource. Other reproduction and display of these resources is prohibited. No license is granted to any other TI intellectual property right or to any third party intellectual property right. TI disclaims responsibility for, and you will fully indemnify TI and its representatives against, any claims, damages, costs, losses, and liabilities arising out of your use of these resources.

TI's products are provided subject to TI's Terms of Sale (<https://www.ti.com/legal/termsofsale.html>) or other applicable terms available either on [ti.com](https://www.ti.com) or provided in conjunction with such TI products. TI's provision of these resources does not expand or otherwise alter TI's applicable warranties or warranty disclaimers for TI products.

Mailing Address: Texas Instruments, Post Office Box 655303, Dallas, Texas 75265  
Copyright © 2021, Texas Instruments Incorporated